



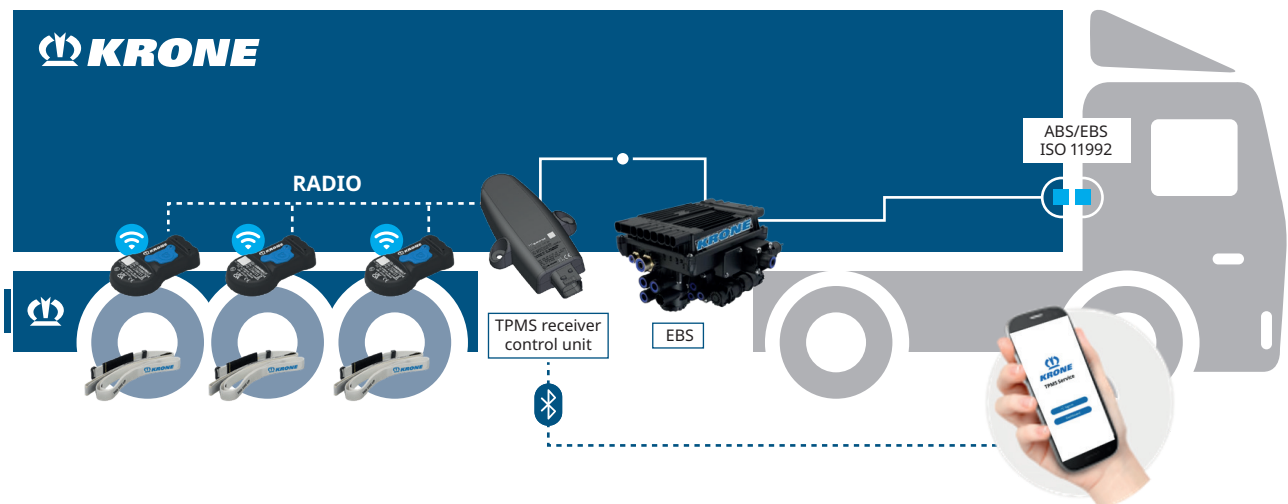
KRONE TPMS MANUAL DASHBOARD



In order to display all relevant TPMS information and to obtain a direct overview, a TPMS dashboard can be accessed directly using the „TPMS Service App“ from KRONE - available free of charge in the iOS Appstore and Google Playstore: no registration required.

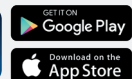


Please ensure external power supply (**ignition ON**)!



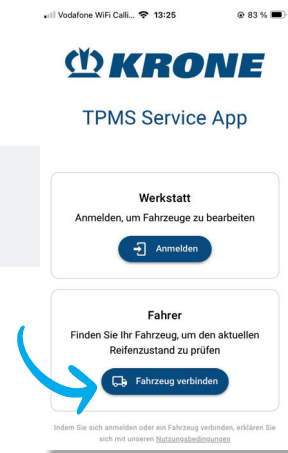
1.

Download the „TPMS Service App“ from KRONE.



2.

Open the app and log-in as a driver by clicking on „Connect Vehicle“.



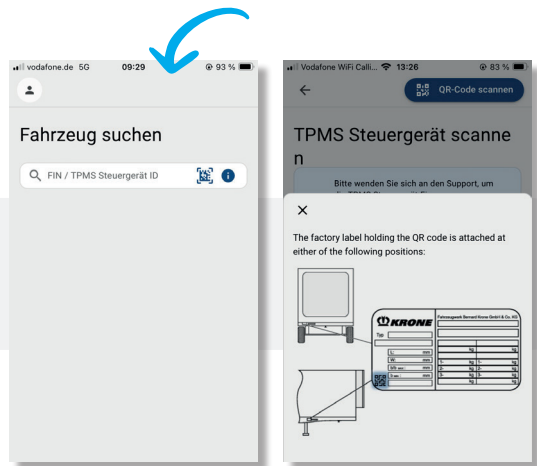
CONTACT: KRONE TPMS SERVICE

Phone: +49 5951 209 260 | tpms.nfz@krone.de
Fahrzeugwerk Bernard KRONE GmbH & Co. KG
Bernard-Krone-Straße 1, 49757 Werlte, GERMANY
www.krone-trailer.com






3. To connect the vehicle, click on „Scan QR“ to scan the manufacture plate.

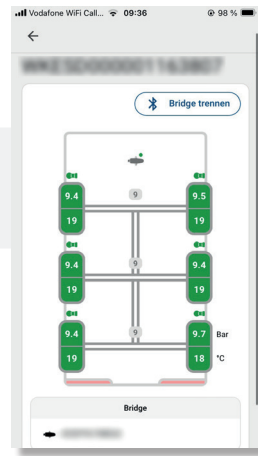


4. Camera opens: Scan the QR code on the manufacture plate.



 Please ensure external power supply (**ignition ON**)!

5. Dashboard opens directly: Tire pressure and temperature can be accessed.



6. Click on a tire to access the detailed information.

