



WE DELIVER THE FUTURE
Trailers and superstructures





CONTENTS

THE KRONE TRAILER PROGRAMME 4

TRAILERS AND SUPERSTRUCTURES 6



Load Carrier 8

Building materials transport 14



KRONE COATING CENTRE 16

PRODUCTION LOCATIONS /
SALES COMPANIES 18

TECHNICAL DATA 20

PLENTY OF SPACE FOR YOUR CARGO. THE RIGHT TRAILER FOR EVERY CHALLENGE.

WE OFFER YOU OPTIMAL SOLUTIONS FOR ALL TRANSPORT REQUIREMENTS. DISCOVER OUR PRODUCTS WHICH SET REAL STANDARDS IN TERMS OF INNOVATION AND QUALITY. A RANGE OF TRAILERS WHICH ENSURE VALUE STABILITY AND ARE ALSO PRACTICAL AND USER-FRIENDLY.

Always a good solution – the right vehicle for every application: From the Profi Liner, an all-rounder, to specialist vehicles such as the Paper Liner or Coil Liner, we offer you flatbed semitrailers for every situation and with different specifications. Maximum volume in our Mega Liner, special load securing equipment in our Paper Liner or Coil Liner. KRONE knows what transport professionals need and therefore takes practical details into account.

The Coffer-type semitrailers from KRONE are for professionals from professionals. With our Dry Liner and Cool Liner, you are ideally prepared for all refrigerated, fresh or dry goods transport. From transporting flowers, through meat hanging and doubledeck, to multi-temperature insulating partitions, there are also numerous variants for you, the customer, to choose from.

Sturdy and multi-functional – these are the characteristics of KRONE'S Container Chassis and swap bodies. Practical, versatile and easy to use – these criteria are found in both the chassis and the swap-bodies. And last, but not least, KRONE also considers an aerodynamic design.

Trailers and superstructures round off the diverse product range of KRONE. Simple and safe handling, tested components, first-class manufacture as well as the long-term protection provided by the cathodic dip coating plus powder make KRONE vehicles an investment which pays off in every case.







KRONE
We Deliver the Future



LOAD CARRIER

www.krone-trailer.com

QUALITY | COMPETENCE | SERVICE

KRONE
We Deliver the Future



LOAD CARRIER



LOAD CARRIER

KRONE
We Deliver the Future

KRONE

TRADITIONALLY INTELLIGENT. KRONE TRAILERS AND SUPERSTRUCTURES.

FUNCTIONALITY HAS A GREAT TRADITION WITH US. WE HAVE ALWAYS DEVELOPED SEMITRAILERS AND CURTAIN VEHICLES, WHICH ARE ORIENTED TO EVERYDAY WORK IN TERMS OF THE EQUIPMENT THEY ARE FITTED WITH. OUR CUSTOMERS COULD AND CAN ALWAYS RELY ON OUR TRAILERS AND SUPERSTRUCTURES IN EVERY SITUATION. ABOVE ALL, BECAUSE OUR INTELLIGENT SOLUTIONS ALLOW ORDERS TO BE HANDLED WITH LOW COSTS.



EXPERIENCE IS THE MOTHER OF INVENTION. THE LOAD CARRIER.

WE HAVE STOOD FOR REAL INNOVATION IN THE WORLD OF TRANSPORT FOR MANY DECADES. OUR VEHICLES ARE CONSTANTLY DEVELOPED AND STILL REMAIN LOYAL TO THEMSELVES. THEY ARE ALWAYS CONSTRUCTED SOLIDLY, SIMPLE TO USE AND SATISFY ON THE ROAD WITH THEIR ABSOLUTE RELIABILITY.

Flexibility based on tradition

Our Load Carriers have been an investment in the future since 1971, which has paid off thanks to their functional handling, certified components and first-class construction.

Brought together with a system

One of our flagship products is our Load Carrier. A real classic, designed for day-to-day transport tasks, is our trailer for construction material transport. The exact type of materials which have to be moved from A to B does not matter. The simple handling of the posts and the front wall designed to allow loading from the side throughout the length of the vehicle will be a great help for transporting every cargo.





LOAD CARRIER. PRODUCT FEATURES.



Platform superstructure on 2-axle and 3-axle motor vehicles.

In the sliding curtain version with a lowered coupling for central axle trailers for volume transport.



Drawbar wale with adjustable length.

The adjustable drawbar wale enables coupling at different lengths to the tractive unit.



Low-maintenance equipment.

Drawbar trailers are fitted with a low-maintenance ball-type live ring and draw fork with silent bushings and height adjustment device in accordance with UVV (accident prevention regulations).



Lowered coupling.

Upon request, KRONE equips your truck with a lowered coupling and a foldable underrun bar. The underrun protection as a round tube offers more clearance between the underrun protection and the drawbar wale.



Robust side guards.

The side collision protection is firmly screwed to the frame and powder-coated in white for safety reasons.



Folding side collision protection.

The side collision protection is also available as a folding version. This allows easy access to the spare wheel bracket found behind it.



Volume superstructure.

Steel plates above the wheels allow a particularly low superstructure and thus the largest possible cargo area. As an option, a hydraulic raising roof is available.



Control console with raising and lowering valves.

The control consoles are protected and positioned so they are easily accessible. Central axle trailers have one valve. With drawbar trailers, the front and rear axles can be controlled separately using two raising and lowering valves.



Smooth rear doors.

Integrated lock rods and door locks (4 locks optional) provide a smooth surface, which is ideal for decals application.



Stable front wall.

Rigid front wall is made of steel and designed to allow free loading from the side.



Spare wheel bracket as a winch.

For volume transportation, the trailers can be fitted with the spare wheel bracket as a winch version.



Stowage boxes.

On central axle trailers, the space between the axles can be fitted with a tool box to save space.



Underrun protection and lighting brackets as individual components.

The separate and bolted-on design of the components means that they can be quickly and easily replaced. (Rear spray suppression optional)



Front wall offset.

Central axle trailers with volume superstructures can be fitted with a front wall offset which is optimised for driving round corners.



LOAD CARRIER. PRODUCT FEATURES.



Simple sliding roof operation.

The sliding roof has a gas-spring supported end beam for simple operation from the ground.



Sturdy front wall.

The inside of the front wall has double collision protection thanks to a raised chassis at the front and a phenolic protection plate bolted to the front wall.



Safe drop side equipment.

Side panel drop sides closures have an adjustable mechanism. The side post is fitted with an unhook safety arrangement and drop sides with a tension rod and internal pressure detector.



Solid Multi Lock frame.

Similarly, the Load Carrier with drop sides has the Multi Lock outer frame. An integrated collision protection prevents damage to the drop sides.



Multi Lock equipment.

Tension straps with flat hooks allow the use of the Multi Lock external frame even with the board walls closed.



Through-loading trailer.

In volume design with 3-axle truck and centre-axle trailer. The rear panel of the flatbed body and the front bulkhead of the trailer are fitted with 4-paneled container doors. The drawbar wale is available with a pneumatic lock on request so that the intermediate distance of the tractor can be conveniently set for driving as well as for through-loading use. A solid bridging plate in front of the front bulkhead of the trailer enables through-loading up to the front bulkhead of the platform body. Upon request, the bridging plate can be equipped with a lifting aid.



Tail lifts.

Tail lifts from different manufacturers, in upright or foldable design, are available.



2-axle drawbar trailer.

In sliding curtain design.



3-axle drawbar trailer.

In sliding curtain design.

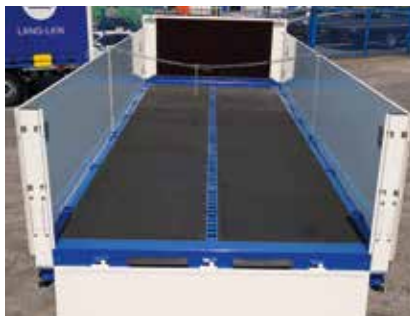


LOAD CARRIER. BUILDING MATERIALS TRANSPORT.



Building materials trailer.

Over many years KRONE has introduced many successful vehicle solutions for everyday transport. Trailers for carrying building materials of any type are included. Fold-down and removable Kinnegrip posts are also part of the product range due to their ease of handling. Furthermore, the front wall has been designed to allow completely free loading from either side.



Multi Rail

The strapping rail for building material trailers integrated in the centre of the floor runs continuously over the entire trailer length. Two strapping points, each with 2,000 daN are located every 100 mm along the rail. The load must not exceed a total of 8,000 daN over a length of 1,000 mm.



Plug-in posts.

A set of 6 post sockets is available as an option. These can be inserted into the outer frame as well as the Multi Rail strapping rail.



Flat front wall.

With its flat front wall, the KRONE building material trailer can be loaded and unloaded from the side freely. The front wall is available in 1,200 and 1,600 mm heights.



Kinnegrip centre posts.

The standard Kinnegrip posts can be removed when they are folded down and are fitted with easy-to-hold hand levers. For optimum load flexibility the rear corner posts can be arranged across or along the trailer bed.



Retractable fold-down step.

The side board walls are each fitted with two recessed fold-down steps at the front right-hand side and the rear left-hand side, to provide safe access to the trailer bed.



Multi Lock external frame.

The new Multi Lock external frame allows access to the strapping points even when the board walls are closed.

Board wall lifting aid.

An optional board wall lifting aid makes operating the 1,000 mm high board walls easier. The lifting aid is gas-spring assisted and can also be retrofitted to the new model series. The board walls are fitted with continuous tie rods as standard which reach to the hinge brackets. Thus the board walls are provided with additional stability and safety.



Stowage space.

A PVC tool box or a continuous stowage box with a separate compartment for plug-in posts, offer ample stowage space.



NEW KRONE COATING CENTRE. BENCHMARK FOR CHASSIS COATING AND ENVIRONMENTAL PROTECTION.

THE KRONE QUALITY OFFENSIVE OFFERS KTL-TREATED AND POWDER-COATED CHASSIS TO THE LEVEL OF AUTOMOTIVE MASS PRODUCTION QUALITY – LASTING VALUE, DURABLE AND WITH EXCELLENT CORROSION PROTECTION. PRODUCTION IN WERLTE STANDS FOR RESPONSIBLE ENERGY USE AND RESOURCE MANAGEMENT.

The new Coating Centre is at the heart of the KRONE quality offensive and at the same time, the biggest single investment of the corporate group. At the Werlte location, more than 40 Million euros were invested in a new hall with an area of 16,500 square metres and in the virtually fully automated systems engineering process. Here, the chassis are cathodic dip-painted and powder-coated.

Thanks to the state-of-the-art process, trailers are given maximum protection against environmental conditions and therefore offer excellent corrosion protection. The new surface sealing ensures long-lasting value and offers customers high investment protection. KRONE trailers are weather-resistant and durable against the most testing conditions. The technologies also meet the highest demands for energy efficiency and environmental protection.

Carbon dioxide emissions are reduced by more than 30 percent for each chassis produced. At the same time, 12.6 million kilowatt hours of electricity are saved annually. The environmental management system certified according to DIN ISO 50001 monitors compliance with strict requirements. The German Energy Agency (dena) designated the Coating Centre 2018 as an exemplary flagship project for energy-efficient use of waste heat.



UNLIMITED SERVICE. PRODUCTION LOCATIONS / SALES COMPANIES








Sales:


- KRONE national representations


Production sites:

 **Flatbed semitrailers and trailers**
Fahrzeugwerk Bernard Krone GmbH & Co. KG
Bernard-Krone-Straße 1
49757 Werlte, GERMANY

 **Swap systems**
Brüggen Oberflächen- und Systemlieferant GmbH
Boschstraße 4
49770 Herzlake, GERMANY

 **Box body semitrailers**
Brüggen Fahrzeugwerk und Service GmbH
Geschwister-Scholl-Straße 15
19249 Lübtheen, GERMANY

 **Trailer axles**
gigant - Trenkamp & Gehle GmbH
Märschendorfer Straße 42
49413 Dinklage, GERMANY

 **Flatbed semitrailers**
Krone Ticari Araçlar San. ve Tic. A.Ş.
İbni Melek Mh. Organize Sanayi Bölgesi
2.Sk. No:1 / 35900 Tire / İzmir / Türkiye

KRONE Sales
International
can be found here



TECHNICAL DATA.

TYP	PROFI CARRIER					
	CENTRAL-AXLE ZZP 18 eL4-CS	2-AXLE AZP 18 eL4-CS	2-AXLE AZP 18 eL41-BS	2-AXLE AZP 18 eLN4-CS	3-AXLE ADP 27 eL4-CS	3-AXLE ADP 27 eLN4-CS
Axle load	18,000 kg	18,000 kg	18,000 kg	18,000 kg	24,000 kg	24,000 kg
Allowable gross weight	18,000 kg	18,000 kg	18,000 kg	18,000 kg	24,000 kg	24,000 kg
Tare weight	4,830 kg	4,170 kg	3,710 kg	4,330 kg	5,240 kg	5,420 kg
Axle spread	1,810 mm	4,870 mm	4,870 mm	4,870 mm	5,235 mm	5,135 mm
Neck height		140 mm	200 mm	70 mm	140 mm	70 mm
Side access length	7,300 mm	7,100 mm	7,100 mm	7,100 mm	8,200 mm	8,200 mm
Side access height	2,650 mm	2,600 mm		2,700 mm (385/65 R 22,5) 2,750 mm (385/55 R 22,5)	2,600 mm	2,700 mm (385/65 R 22,5) 2,750 mm (385/55 R 22,5)
Internal height	2,740 mm	2,690 mm		2,790 mm 2,840 mm	2,690 mm	2,790 mm 2,840 mm
Travel height, unloaded	1,210 mm	1,300 mm	1,290 mm	1,220 mm (385/65 R 22,5) 1,160 mm (385/55 R 22,5)	1,300 mm	1,220 mm (385/65 R 22,5) 1,160 mm (385/55 R 22,5)
Drawbar length	2,250 mm	2,200 mm	2,200 mm	2,200 mm	1,850 mm	1,850 mm
Total length	9,620 mm	9,035 mm	9,020 mm	9,035 mm	10,370 mm	10,230 mm

Dimensions and weights for standard units

MEGA CARRIER

TYPE

	CENTRAL-AXLE ZP 18 zLT4-CS	CENTRAL-AXLE ZP 18 eLT4-CS	2-AXLE AZP 18 zLNT4-CS	3-AXLE ADP 27 zLNT4-CS
Axle load	18,000 kg	18,000 kg	18,000 kg	24,000 kg
Allowable gross weight	18,000 kg	18,000 kg	18,000 kg	24,000 kg
Tare weight	4,920 kg	4,940 kg	4,980 kg	5,520 kg
Axle spread	1,810 mm	1,810 mm	5,385 mm	5,135 mm
Neck height			70 mm	70 mm
Side access length	7,700 mm	7,700 mm	8,200 mm	8,200 mm
Side access height	2,910 mm	2,860 mm	2,925 mm	2,950 mm
Internal height	3,050 mm	3,000 mm	3,015 mm	3,040 mm
Travel height, unloaded	915 mm	1,030 mm	955 mm	935 mm
Drawbar length	2,250 mm	2,250 mm	2,200 mm	2,000 mm
Total length	10,520 mm		10,135 mm	10,370 mm



Production facility Wertle (Germany)



Production facility Herzlake (Germany)



Production facility Dinklage (Germany)



Production facility Lübtheen (Germany)



Production facility Tire (Turkey)

Imprint

Editor:
KRONE COMMERCIAL VEHICLE SE
Bernard-Krone-Straße 1
49757 Werlte, GERMANY

Responsible for the content:
Ingo Lübs

Editorial:
Hermann Beusing

Graphic design:
Katja Langen

Photos:
KRONE COMMERCIAL VEHICLE SE
©www.fotolia.de

Ex: 09/2018

The images and descriptive text used may include special equipment.
Printing errors, mistakes and amendments reserved.

KRONE COMMERCIAL VEHICLE SE

Bernard-Krone-Straße 1, 49757 Werlte, GERMANY

Phone: +49 5951 209-0, Fax: +49 5951 209-98 268

info.nfz@krone.de, www.krone-trailer.com