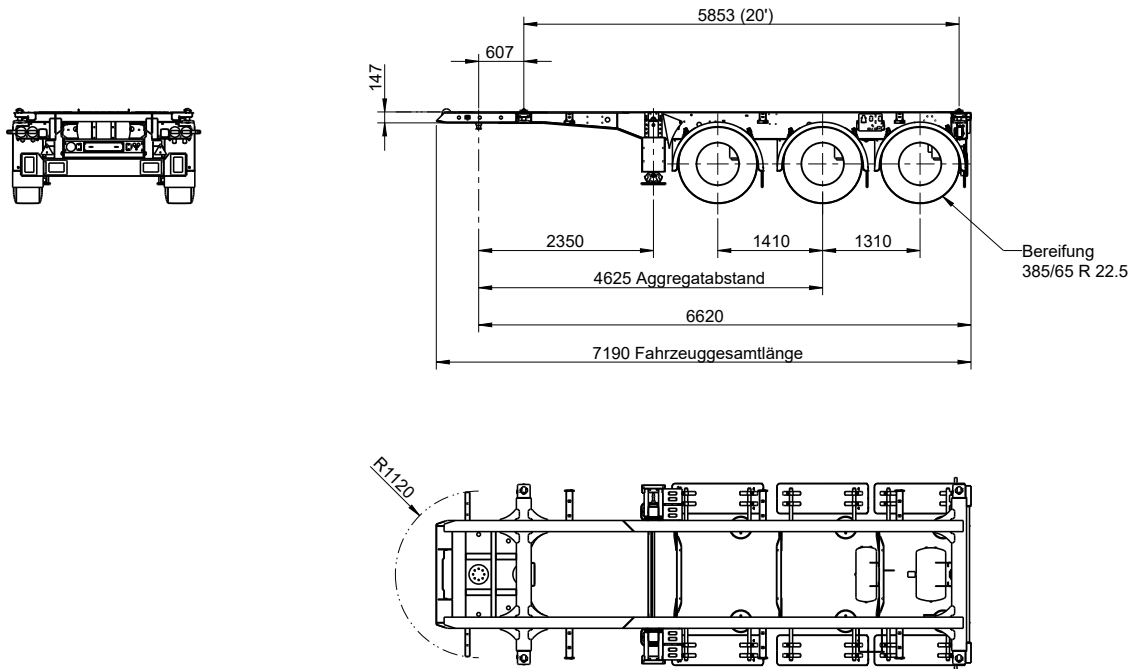


Box Liner

» Type: SDC 27 eL20'



Chassis with corresponding locks for container transport: 1 x 20'



| Technical data | |
|--|-------------------|
| Type: | SDC 27 eL20' |
| King Pin load: | 14,000 kg |
| Axle load (technically possible): | 27,000 kg |
| Perm. total weight (technically possible): | 41,000 kg |
| Tare weight: | approx. 3,400 kg |
| Payload (technically possible): | approx. 37,600 kg |
| Axle spread*: | 1,410 / 1,310 mm |
| 5th wheel height: | 1,150 mm |
| Neck height (incl. coupling plate): | 147 mm |
| Distance kingpin - rear end: | 6,620 mm |

(Dimensions and weights for standard units)
 *= option: 1,410/1,310 mm

| Load distribution: | | | | | | |
|--------------------|---------------------------------|---------------|-----|-----------|-----|-------------------|
| Loading options | Total weight of containers (kg) | Coupling load | | Axle load | | Total weight (kg) |
| | | (kg) | (%) | (kg) | (%) | |
| 20' | 31,500 | 8,000 | 23 | 27,000 | 77 | 35,000 |

| Technical description |
|---|
| Chassis made of I beams welded to crossmembers; compact-rear-design; neck height: 147 mm (incl. coupling plate); bolted 2" kingpin, 1 position: mounted on 570 mm; rear underrun protection and side guards acc. to EC regulation |
| 1 x 20' Container lockings rear position |
| 2 mechanically operated landing legs, 2 x 12 tones capacity, half round compensating feet |
| Low-maintenance axles with air suspension and disc brakes (430 mm); raise/lower valve incl. auto reset valve; Rims centre nave |
| Tyres: 6 x 385/65 R 22.5, brand: Krone choice |
| Wheel covering according to EC-regulations; Spray suppression according to EC-guidelines |
| EC braking system including vehicle stabilising system; low-maintenance automatic; spring-loaded hand brake; 2S/2M EBS system, 2 sensors on each axle with RSS, diagnostics on ISO 7638 socket (EBS) |
| 24 volts lighting system with 2 x 7-pin socket DIN ISO 1185/3731; front and rear marker lights; with two multi-function rear lights acc. to EC incl. rear fog light and reversing lights; 2 large contouring lights with rubber arm; side marker lights in LED |
| Steel parts shot blasted, with KTL primer and high-quality surface coating (standard painting single-colour); axles incl. wheel hubs painted black; underrun protection and light panel coated white for safety reasons; wheels silver with high-quality paint finish; accessories black or galvanized. reflective outline marking according to ECE-R48 |



Fahrzeugwerk Bernard KRONE GmbH & Co. KG
 Bernard-Krone-Straße 1, 49757 Werlte, GERMANY
 Phone: +49 (0) 5951 209-0, Fax: +49 (0) 5951 209-98-268

Subject to modifications!
 VF/Beu issue 03/2020