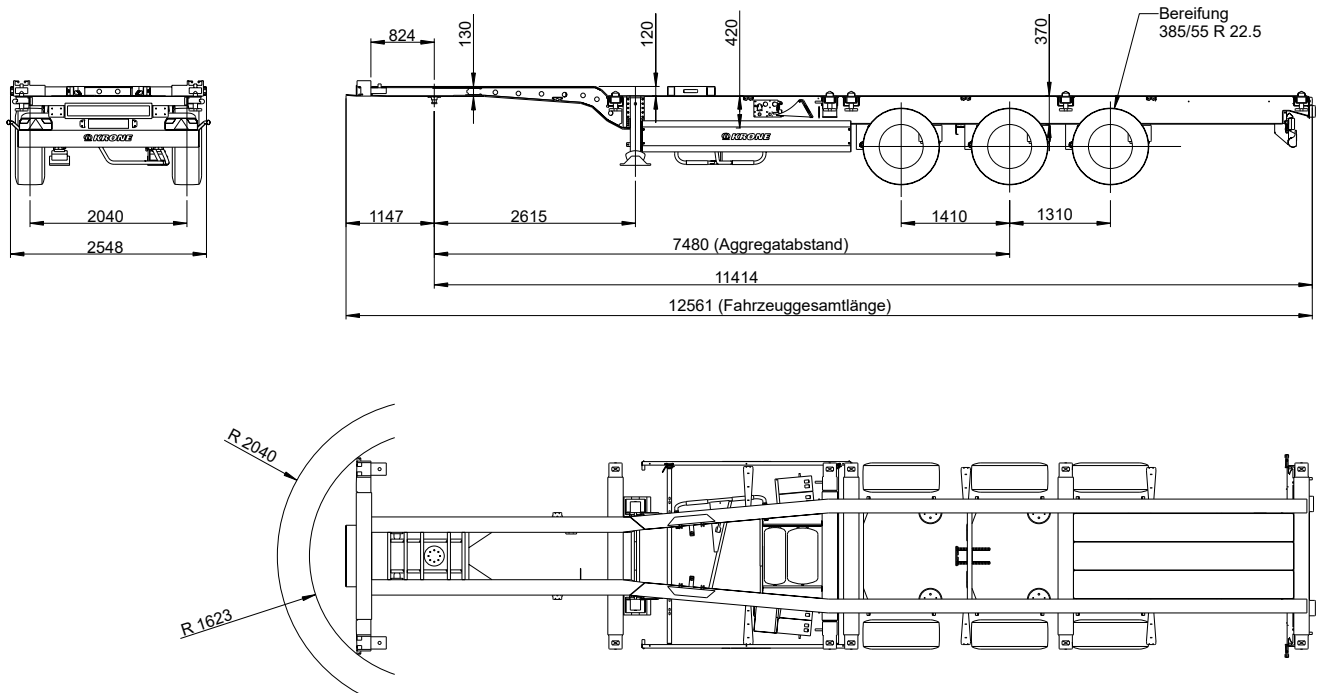


Box Liner

» Type: SDC 27 eLT3



Chassis with corresponding locks for container transport: 1 x 40' (with tunnel), 2 x 20', 1 x 20'1 x 20' on-centre up to 25 tons and 1 x 30' rear-flush



Attention: The transport of filled tank containers is prohibited!

Technical data

Type:	SDC 27 eLT3
King Pin load:	14,000 kg
Axle load (technically possible):	27,000 kg
Perm. total weight (technically possible):	41,000 kg
Tare weight:	approx. 4,760 kg
Payload (technically possible):	approx. 36,240 kg
Axle spread:	1,410 / 1,310 mm
5th wheel height:	1,100 mm
Neck height (incl. coupling plate):	130 mm
Distance kingpin - rear end:	11,414 mm

(Dimensions and weights for standard units)

Load distribution:

Loading options	Total weight of containers (kg)	Coupling load		Axle load		Total weight (kg)
		(kg)	(%)	(kg)	(%)	
1x 20' on-centre	30,000	10,120	28	24,880	72	35,000
2x 20'	2x 16,500	11,000	29	27,000	71	38,000
40' HighCube/ISO	33,000	11,000	29	27,000	71	38,000
30' rear flush	25,580	3,580	12	27,000	88	30,580

Technical description

Chassis made of I beams welded to crossmembers; cranking 120 mm; neck height: 130 mm (incl. coupling plate); bolted 2" kingpin, mounted on 825 mm; rear bumper; rear underrun protection and side guards acc. to EC regulation;

Container lockings for: 1 x 40', 2 x 20', 1 x 20'1 x 20' on-centre up to 25 tons and 1 x 30' rear-flush

Available on request: Height adjustable container lockings and foldable supports (for transport of container without tunnel), rear bulb plate platform

2 mechanically operated landing legs, 2 x 12 tones capacity, half round compensating feet

Low-maintenance axles with air suspension and disc brakes (430 mm); raise/lower valve incl. auto reset valve; Rims centre nave

Tyres: 6 x 385/55 R 22.5, brand: Krone choice

Wheel covering according to EC-regulations; Spray suppression according to EC-guidelines

spare wheel carrier as an option

EC braking system including vehicle stabilising system; low-maintenance automatic; spring-loaded hand brake; 2S/2M EBS system, 2 sensors on each axle with RSS, diagnostics on ISO 7638 socket (EBS)

24 volts lighting system with 2 x 7-pin socket DIN ISO 1185/3731; front and rear marker lights; with two multi-function rear lights acc. to EC incl. rear fog light and reversing lights; 2 large contouring lights with rubber arm in LED; side marker lights in LED

Steel parts shot blasted, with KTL primer and high-quality surface coating (standard painting single-colour); axles incl. wheel hubs painted black; underrun protection and light panel powder white for safety reasons; wheels silver with high-quality paint finish; accessories black or galvanized; reflective outline marking according to ECE-R48

