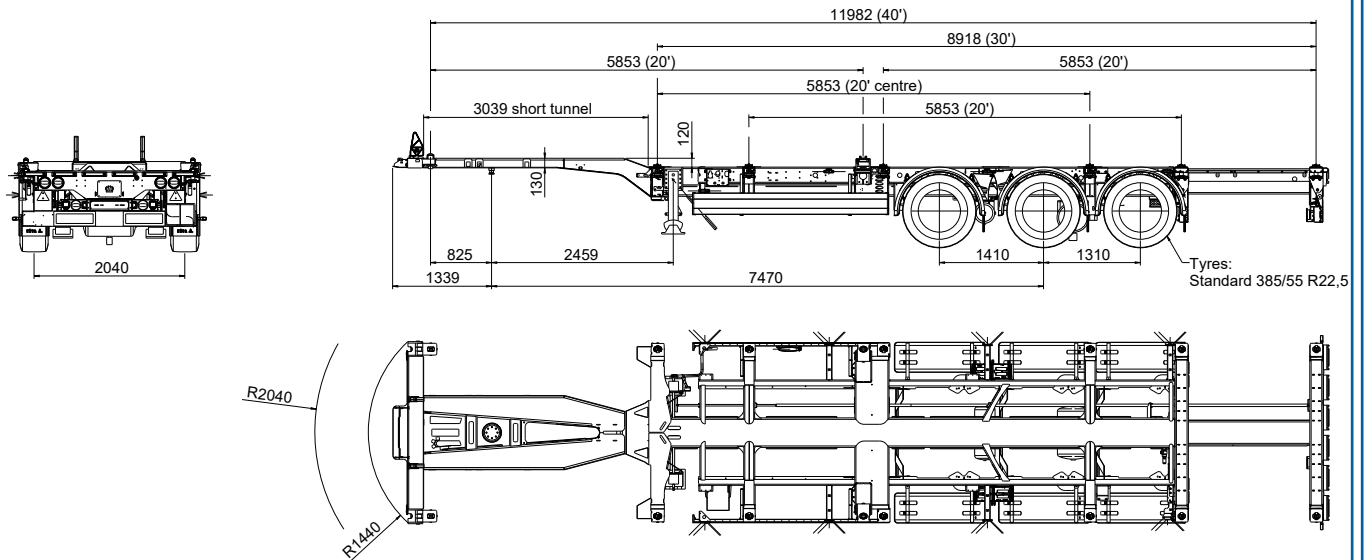


Box Liner

» Type: SDC 27 eLTU40



Extendable Chassis with corresponding locks for container transport: 1 x 40' with tunnel, 2 x 20'; 1x 20' rear flush (1 x 20' on centre, 1x 30' rear flush, 1x 40' without tunnel as an option)



Technical data:	
Type:	SDC 27 eLTU40
King Pin load (technically possible):	16,000 kg
Axle load:	27,000 kg
Perm. total weight:	41,000 kg
Tare weight:	approx. 4,390 kg
Payload:	approx. 36,610 kg
Axle spread:	1,410 / 1,310 mm
5th wheel height:	1,110 mm
Neck height (incl. coupling plate):	130 mm
Distance kingpin - rear end: (40')	11,250 mm

(Dimensions and weights for standard units)

Technical description:
Chassis in telescoping center construction by using high-strength fine-grained steel; cranking 120 mm; bolted 2" kingpin, 1 position; chassis at rear manually extendable with crank, mechanically (pneumatic as an option); rear extension with manual locking; steel delta impact protection profile at the rear; rear underrun protection and side guards acc. to EC regulation; Tractionrear with a very good load distribution by transporting of a 20' container rear flush
Container lockings for: 1 x 40' with tunnel, 2 x 20', 1x 20' rear flush (1 x 20' on centre, 1x 30' rear flush, 1x 40' without tunnel as an option)
Height adjustable container lockings and foldable supports for transport of container without tunnel (option)
2 mechanically operated landing legs, 2 x 12 tones capacity, half round with plate
Low-maintenance axles with air suspension and disc brakes (430 mm); raise/lower valve incl. auto reset valve; Rims centre nave
Tyres: 6 x 385/55 R 22.5, brand: Krone choice
without spare wheel carrier
Wheel covering according to EC-regulations; Spray suppression according to EC-guidelines
EC braking system including vehicle stabilising system; low-maintenance automatic; spring-loaded hand brake; 2S/2M EBS system, 2 sensors on one axle with RSS, diagnostics on ISO 7638 socket (EBS); 4 wheel chocks with holder
24 volts lighting system with 2 x 7-pin socket DIN ISO 1185/3731; front and rear marker lights; with 2x2 round 3 chamber rear lights side by side acc. to EC; 2 rear fog light and reversing light; 2 large contouring lights with rubber arm; side marker lights in LED
Steel parts shot blasted, with KTL primer and high-quality surface coating (standard painting single-colour); axles incl. wheel hubs painted black; underrun protection and light panel coated white for safety reasons; wheels silver with high-quality paint finish; accessories black or galvanized; reflective outline marking according to ECE-R48

Load distribution TU40:						
	Total weight of containers (kg)	Coupling load (kg) (%)		Axle load (kg) (%)		Total weight (kg)
20' centre (option)	34,000	11,670	30,4	26,730	69,6	38,400
20' centre (option)	30,400	10,560	30,3	24,240	69,7	34,800
20' rear flush	27,700	5,100	15,9	27,000	64,1	32,100
2x 20'	2x 17,000	11,740	30,6	26,660	69,4	38,400
30' option	26,500	3,920	12,7	26,980	87,3	30,900
40'	34,000	11,740	30,6	26,660	69,4	38,400
40' 2 axle tractor unit	30,400	10,600	30,5	24,200	69,5	34,800



Fahrzeugwerk Bernard KRONE GmbH & Co. KG
Bernard-Krone-Straße 1, 49757 Werlte, GERMANY
Phone: +49 (0) 5951 209-0, Fax: +49 (0) 5951 209-98-268

Subject to modifications!
VF/Beu issue 12/2020