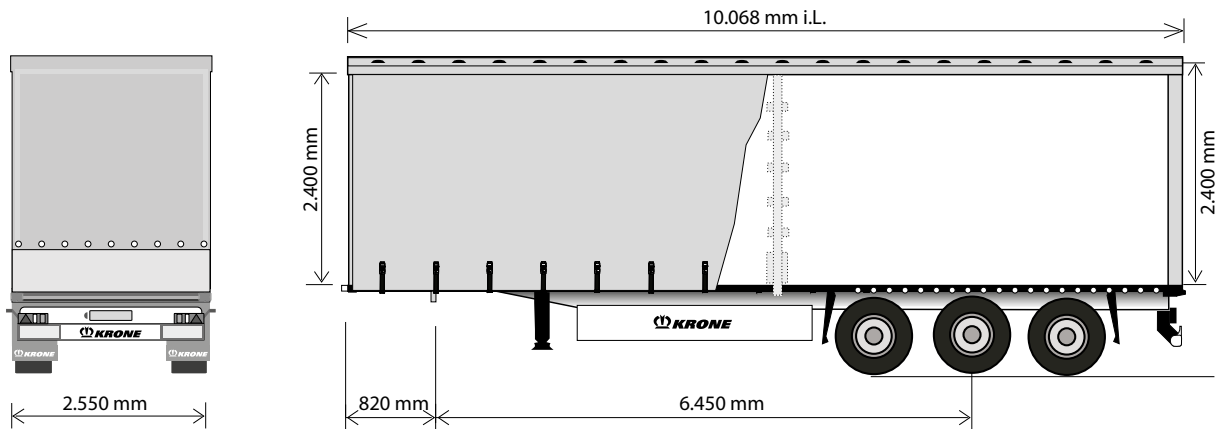


Coil Liner Compact

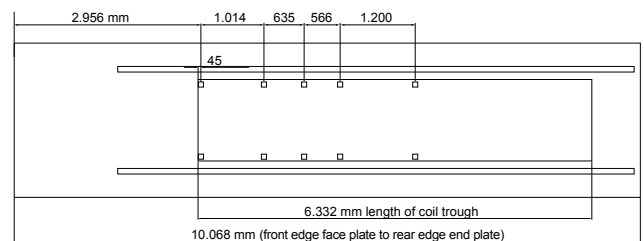


Technical Data:

Type:	SDP 27 eLCC10-CS
King pin load:	14,000 kg
Axle load (technically possible):	27,000 kg
Allowable gross weight (technically possible):	41,000 kg
Tare weight:	ca. 4,999 kg
Payload (technically possible):	ca. 36,001 kg
Axle spread:	1,410 / 1,310 mm
Neck height:	180 mm
5th wheel height:	1,050 - 1,250 mm
Side access length:	10,068 mm
Side access height:	2,480 mm
Side access width:	2,300 - 2,400 mm
Turning radius:	2,040 mm

(Dimensions and weights for standard units)

Position of the coil well (6,3 m)



Technical description:

Multilock side rave including load securing positions every 100 mm; 8 pairs of heavy duty lashing rings in floor (incl. cover), positioned along outer frame; 1 pair of heavy duty lashing ring in neck area; Vario Coil load securing system; 2 coil stanchions with support device; Vario Coil rails in the floor; 1 Vario Block with retaining device for 2 stanchions

Coil trough, 6,332 mm long (incl. 5 pairs of post sockets and 2 coil stanchions)

2 alloy landing legs, Jost Modul CA

Low-maintenance SAF axles with air suspension and disc brakes Intradisc plus (370 mm) offset 120; raise/lower valve incl. auto reset valve

Tyres: 6 x 385/65 R 22.5, mounted on alloy rims; brand: Krone choice

spare wheel carrier as an option

Wheel covering according to EC-regulations; Spray suppression according to EC-guidelines

Brake system according to ECE R 13, including vehicle stabilising system; spring parking brake; 2S/2M EBS system, 2 sensors on one axle with RSS, diagnostics by ISO 7638 socket (EBS); alloy air tank

Lights according to UN ECE reg. no. 48; 24 volts lighting system with 2 x 7-pin socket DIN ISO 1185/3731; front and rear marker lights; two multi-function rear lights incl. rear fog light and reversing lights; contouring lights, number plate lights and side marker lights in LED

30 mm thick, phenolic coated plywood floor, cut surfaces fully waterproofed and sealed. Strength acc. to DIN EN 283; for floor loadings up to 5,460 kg stacker-truck axle load

Alloy cant rail, continuous, for support of sliding curtain and posts, Edschliding roof, Roof also movable to the front and rear

Front wall bolted with solid corner posts; lateral restricted through loading; Front wall reinforced with plywood inner skin; quick release for side curtains on front wall; retainer for curtain cord

Alloy rear wall, 750 mm high, hinged and removable, tension rod, 2 foldable steps; clamping device for tarpaulin with ratchet at the rear frame

1 pairs of side posts, opposite arranged

Delta shaped rubber profiles at rear; delta steel buffers at rear; load security certificate according EN 12642 Code XL (only for coil transport)

1 PVC curtain with full lengths vertical reinforcements, top with rollers for sliding curtains, bottom with tensioners, curtain tensioner out of stainless steel; roof tarpaulin in white; rear tarpoulin as a roller blind; corner separation at rear with lasso fastening

Steel parts shot blasted, with KTL primer and high-quality surface coating (standard painting single-colour); axles incl. wheel hubs painted black; under-run protection and light panel coated white for safety reasons; wheels silver with high-quality paint finish; reflective outline marking according to ECE-R48