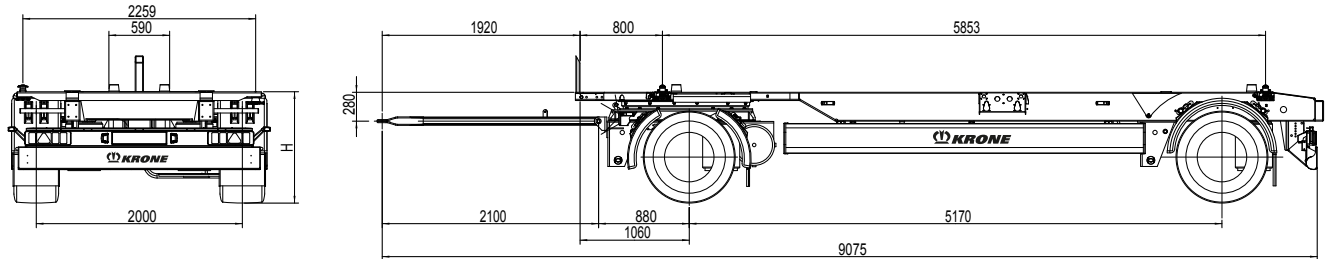


Profi Box Carrier B7 / B10

» Type: AZW 18 eL3B7



Chassis for transporting swap bodies, according to DIN EN 284, size C715, C745 (with additional stop also C782) and containers according to ISO 668/1496, size 20'



Height H (in mm)

Type	Tyres	Driving position		unloaded lowered	loaded lifted
		unloaded	loaded		
B7	445/45 R 19.5	1.080	1.050	1.010	1.370
B10	435/50 R 19.5	1.090	1.060	1.020	1.380

Technical data

Type:	AZW 18 eL3B7	AZW 18 eL3B10
Allowable gross weight:	18,000 kg	18.000 kg
Tare weight, approx.:	2,875 kg	2,875 kg
Payload (without swap body):	15,125 kg	15,125 kg
Axle spread distance:	5,170 mm	5,170 mm
Total length (centre draw bar eye), approx.:	9,075 mm	9,075 mm
Draw bar length:	2,100 mm	2,100 mm
Distance between container lockings:	5,853 mm	5,853 mm
Distance front stop to first locking:	800 mm	800 mm
Chassis height, unloaded and lowered:	1,010 mm	1,020 mm
Chassis height, loaded and lifted:	1,370 mm	1,380 mm
Chassis height in driving position (unloaded):	1,080 mm	1,090 mm
Landing height:	1,020-1,320 mm	1,070-1,320 mm
Landing height (plane ground):	1,020 mm	1,070 mm

(Dimensions and weights for standard units)

Technical description

Double T-longitudinal beams and cross members in welded construction. Neck height: 80 mm, 4 container lockings on 20' basis; removable tunnel central rollers, according to „BDF-Lastenheft“; Protection at rear with large rubber buffer; Rear bumper and side guard according to EC-regulation

Stop at front for swap body 7,3 - removeable for swap body 7; Length of chassis designed for swap body 7 flush with rear

Low maintenance steering pivot and draw bar with rubber baring and retaining spring

Low-maintenance axles with air suspension and disc brakes (370 mm, offset 120); including raise and lower valve, 2 valves; total travel 430 mm; rims centre nave

Tyres: 4 x 445/45 R 19.5, brand Krone choice

spare wheel carrier as an option

Wheel covering according to EC-regulations; Mud guard, 3 black plastics segments at front, rear as half shell with mud flaps; Spray suppression according to EC guideline

Brake system according to EC-regulations; Spring parking brake; Release device for front axle; EBS-braking system, 4S/3M, 4 sensors on 2 axles; EBS-Modulator with electronic stability system; carrier for additional air tank; Diagnostics by ISO7638 plug connection (EBS supply cable)

Lights according to EC-regulations; 24 volts lighting system, with two multi-function rear lights acc. to EC incl. rear fog light and reversing lights; 7-channel-power plug at front for additional uses; 2 contouring lights with rubber arm in LED; side marker lights in LED

Steel parts shot blasted, with KTL primer and high-quality surface coating (standard painting single-colour); axles incl. wheel hubs painted black; underrun protection and light panel powder coated white for safety reasons; wheels silver with high-quality paint finish; reflective line marking according to ECE-R48

Subject to modifications!
VF/Beu issue 02/2015

